



GAT MONTHLY MEMBERSHIP PROGRESS REPORT

Results as of: 7/31/2021

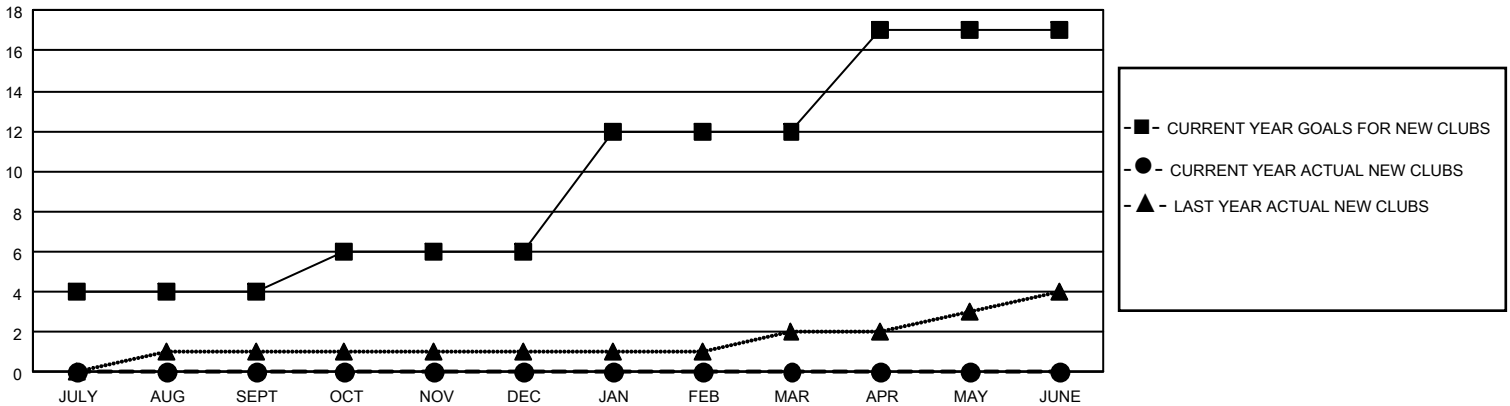
GMT Constitutional Area 1, Group K

REPORT DOES NOT INCLUDE CLUBS IN UNDISTRICTED AREAS.

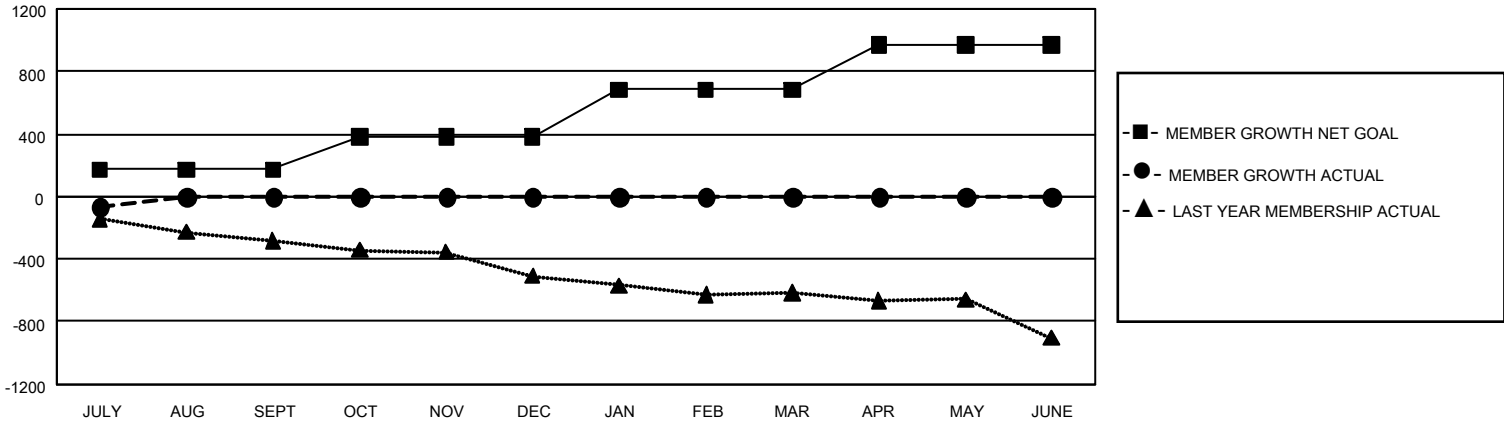
| Clubs | | | |
|-----------------------|---------------|-----------|---------------|
| RESULTS FOR 2021-2022 | | | |
| QUARTER | NEW CLUB GOAL | NEW CLUBS | DROPPED CLUBS |
| JULY/AUG/SEPT | 12 | 0 | 2 |
| OCT/NOV/DEC | 6 | 0 | 0 |
| JAN/FEB/MAR | 18 | 0 | 0 |
| APR/MAY/JUNE | 15 | 0 | 0 |

| Members | | | |
|-----------------------|------------------------|----------------------|--|
| RESULTS FOR 2021-2022 | | | |
| QUARTER | MEMBER GROWTH NET GOAL | MEMBER GROWTH ACTUAL | DROPPED MEMBERS ACTUAL (including transfers) |
| JULY/AUG/SEPT | 173 | 97 | 140 |
| OCT/NOV/DEC | 209 | 0 | 0 |
| JAN/FEB/MAR | 302 | 0 | 0 |
| APR/MAY/JUNE | 288 | 0 | 0 |

GOALS AND ACTUAL NEW CLUBS CUMULATIVE



GOALS AND ACTUAL MEMBERS CUMULATIVE



| | | |
|-------------------------|--|---|
| DROPPED CLUBS: 2 | 45 CLUBS OF 585 ADDED 1 OR MORE NEW MEMBERS | GENDER DISTRIBUTION MALE 10,916 (63.30%) FEMALE 6,328 (36.70%) |
| | DROPPED MEMBERS DECEASED 25 CLUB CANCELLED 0 OTHER 116 TOTAL 141 | CLICK HERE FOR CUMULATIVE MEMBERSHIP DATA |